

ARCHITECTURE AND LANDSCAPE DESIGN

*Individual architectural designs
Planning energy efficient buildings
Te use of healthy natural materials
Sustainable architecture
Use of Sacred Geometry*

*Urban and village planning respecting the rhythm and order of nature
Garden and park projects in relation to the energy of the landscape*

FURNITURE AND INTERIORS

*Furniture and utilities designed according to holistic principles
of ergonomometry, ecology and feng shui.*

GEOMANCY AND FENG SHUI

*Feng shui and geomancy consultation
Conducting analyses and mapping energy in the landscape
Selection of a suitable plot
Designing buildings with respect to geopathic zones*

SEMINARS AND LECTURES

*Lectures and seminars for the public on the theme Holistic Architecture
and the creation of a sustainable environment
Seminars for the development towards one's life purpose
and vitality and creativity*

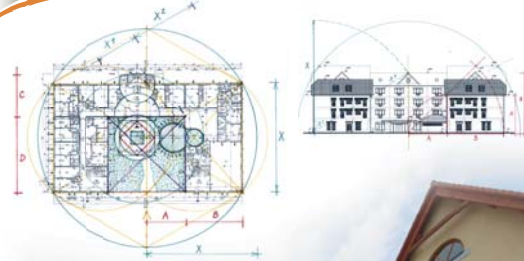
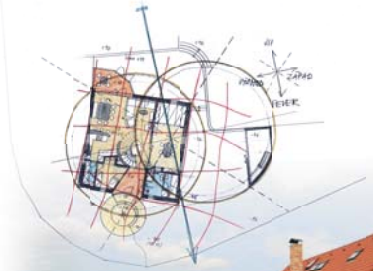
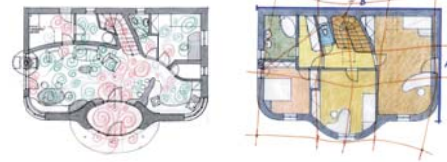
CORPORATE VISUAL STYLE

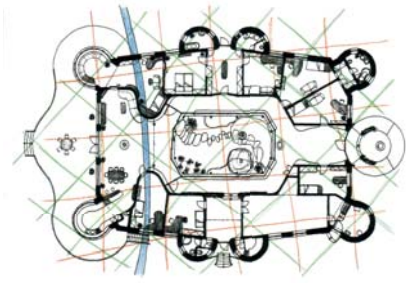
*Consultation with the goal of strengthening and specifying the purpose of projects
Work with the elemental powers of purpose
Alignment of the complete company style*

*Oldřich Hozman, architect
Na Zájezdu 16, 101 00 Prague 10 - Vinohrady, Czech Republic
tel./fax: +420 235 311 622, email: arc@arc.cz, web: www.arc.cz*

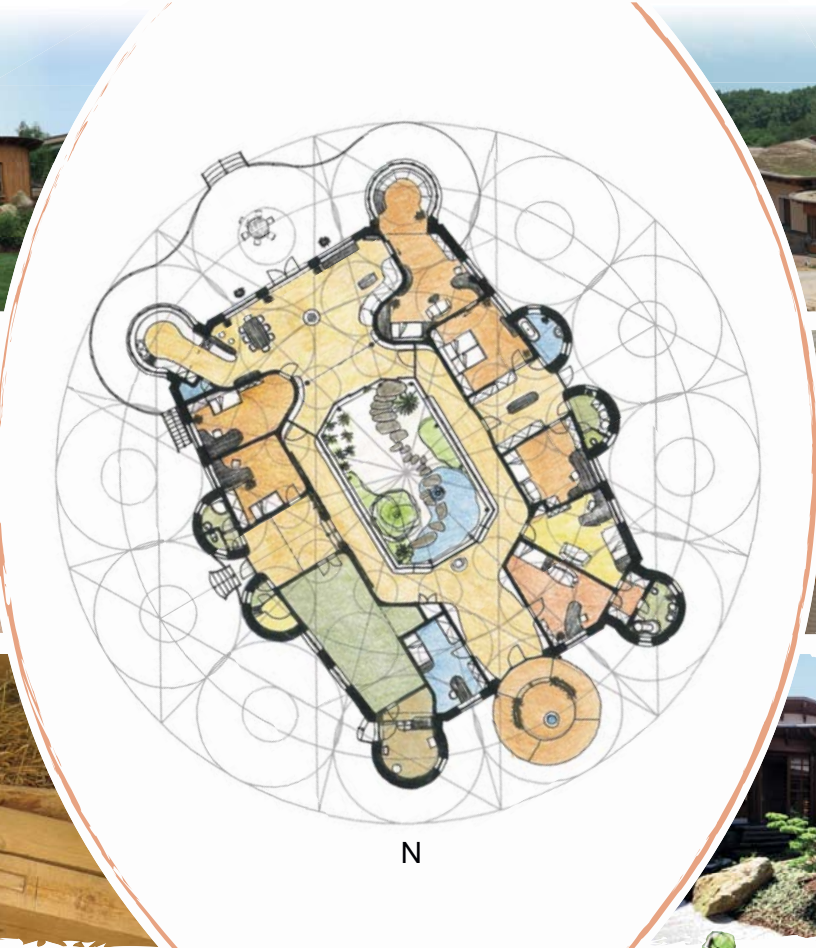


*Oldřich Hozman, architect,
graduated from the Academy of Arts, Architecture and Design, Prague, in the field of architecture.
He has been working as a freelance architect since 1989. His designs incorporate the principles of feng shui, geomancy,
ecology and organic buildings. He supports the holistic view on the creation of a healthy environment and architecture.
He lectures on new approaches to the design of architecture in harmony with nature.*





**REAL CASE OF SUSTAINABLE ARCHITECTURE
FAMILY ATRIUM HOUSE & GARDEN**



PLANNING HOLISTIC ARCHITECTURE

The design methods closest to me are when I can internally relate to the character and ideas of the client and attune myself to the multilevel properties of the place. As a person is a multidimensional being, so too do places have such a character. This reflects the spiritual, emotional, vital, and physical qualities of life. Before beginning work on a project I focus in detail on each of these levels. I discover a vision of the complete quality of the site. In order for architecture to cultivate and develop the soul of the person, it should be a continuous living creation resembling nature's order.

Oldřich Hozman, architect