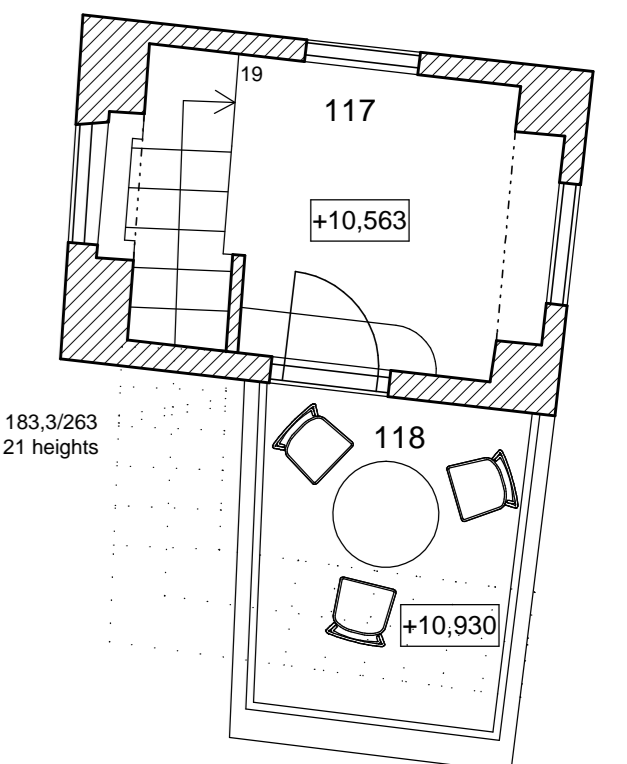
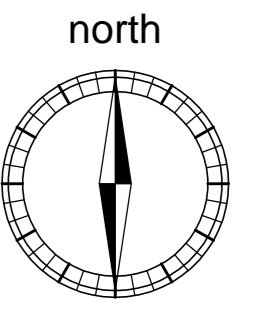


4th floor



no.	room	m2
097	staircase corridor	39,36
098	entrance hall	8,60
099	room	23,70
100	bathroom	7,54
101	wc	1,75
102	balcony	5,94
103	entrance hall	7,97
104	room	35,32
105	bathroom	7,03
106	wc	3,03
107	entrance hall	8,80
108	room	18,56
109	bathroom	9,64
110	wc	1,66
111	entrance hall	5,62
112	room	21,12
113	bathroom	5,10
114	wc	2,00
115	balcony	4,88
116	staircase	4,15
117	room	3,76
118	balcony	3,54

- original constructions
- new constructions
- water surface of pools
- green roof
- paving



+0,000 = 54,84 meters of the survey
 +0,000 = 28,64 meters above the sea

Plan : 3rd and 4th floor, scale 1:50
 Basic project of holistic hotel in El Palol
 investor: Zain Maitreya, s.l.
 architect: Oldrich Hozman
 28.07.2008