
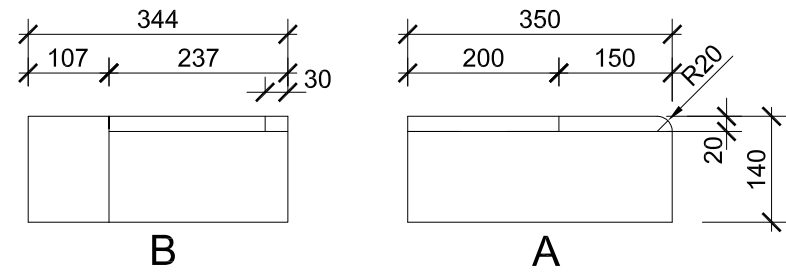
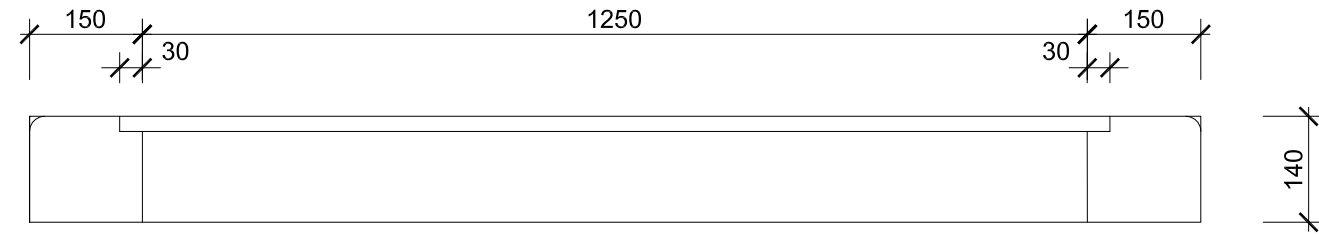


Project: <b>the private house in El Palol</b> property: Mas Palol (Can Fages), municipal area: Torroella de Fluvià, county: l'Alt Empordà, Spain		 ak. arch. Oldřich Hozman Na Zájezdu 16, 101 00 Praha 10 Czech Republic Czech Chamber of Architects Reg. no.: 01284 tel + 420 235 31 16 22 fax + 420 235 31 16 22 www.arc.cz   arc@arc.cz	
Investor: <b>Zain Maitreya, s.l., Margenat 23, 08017 Barcelona, Spain</b>			
Architect: <b>ak. arch. Oldřich Hozman</b>	Drawn by: <b>Ing. arch. Jan Soukup Ing. Tomas Stopka</b>	Profession: <b>CONSTRUCTION</b>	Format: <b>A4, A3</b>
Structural engineer: <b>Joan Carles Capilla Ten and Maria Pia Monaco Baques, arquitectes</b>		Checked by: <b>arch. Arturo de la Maza</b>	
Drawing: <b>STONework ELEMENTS SCHEDULE</b>		Project stage: <b>EXECUTIVE PROJECT</b>	Drawing number: <b>SCH6</b>
		Scale: <b>1 : 10, 1 : 20</b>	
		Date: <b>07 / 2011</b>	

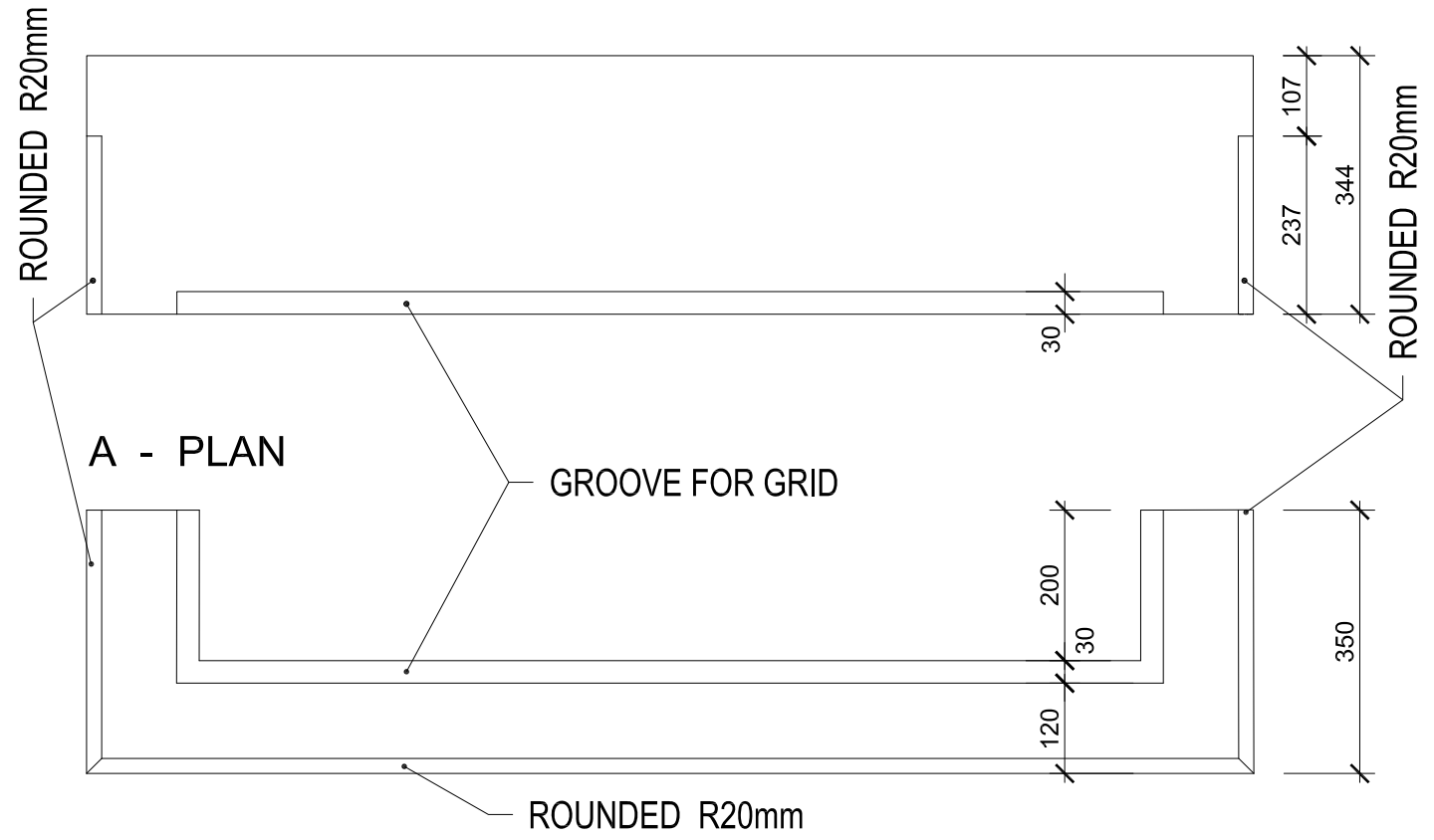
SIDE VIEW



B - FRONT

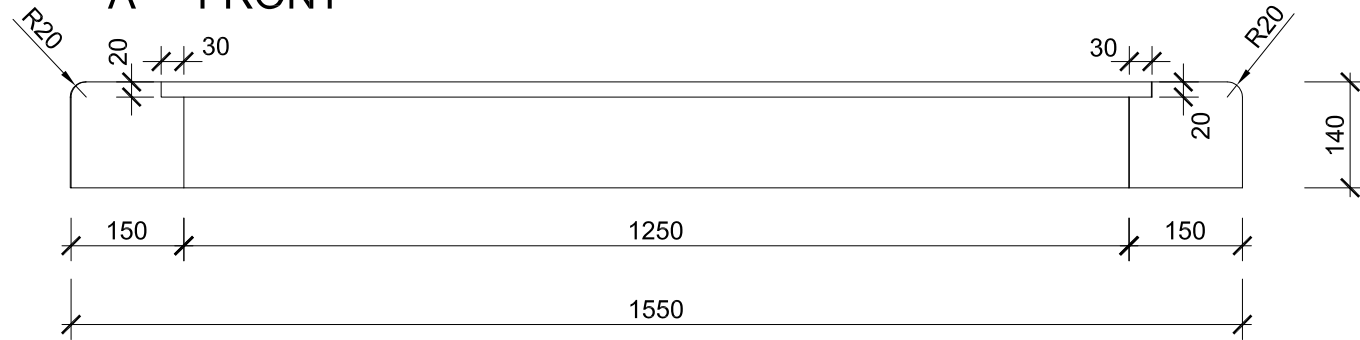


B - PLAN

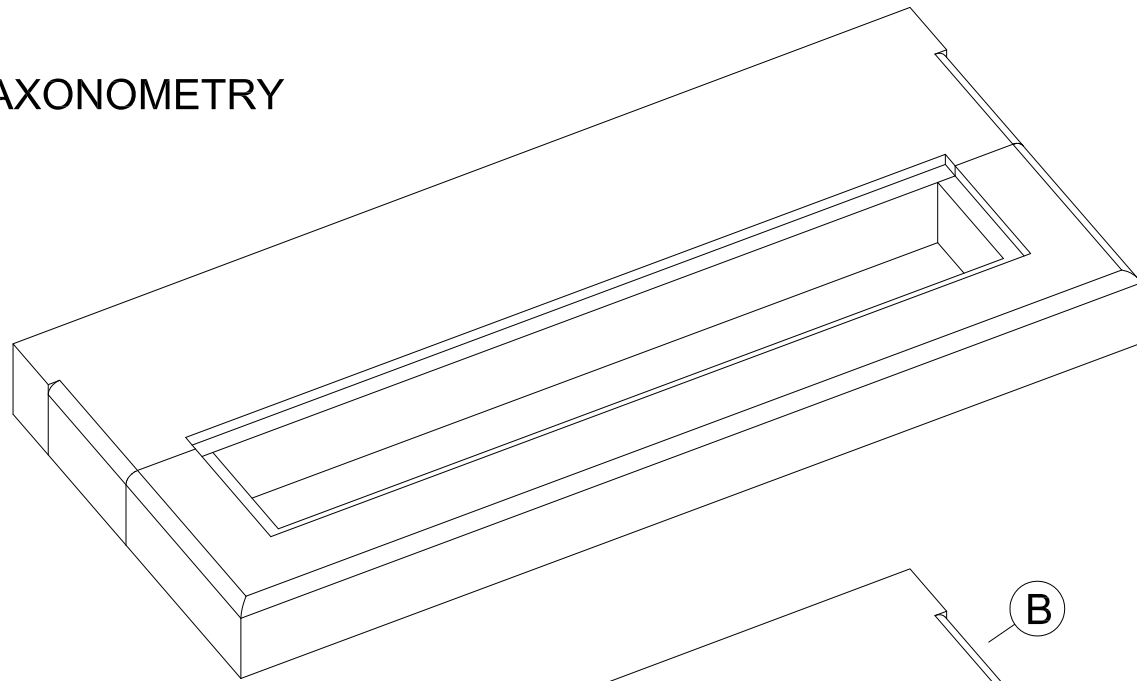


A - PLAN

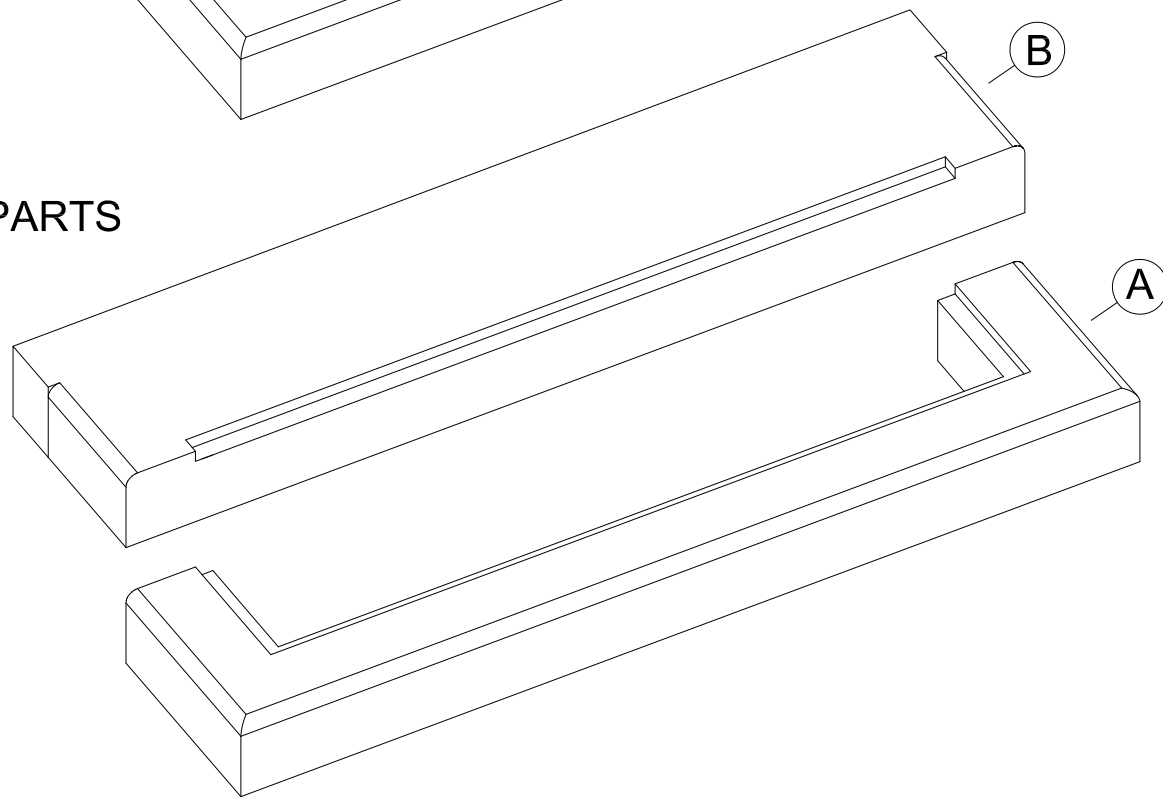
A - FRONT



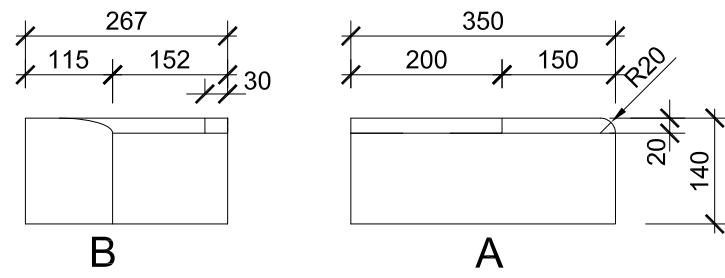
AXONOMETRY



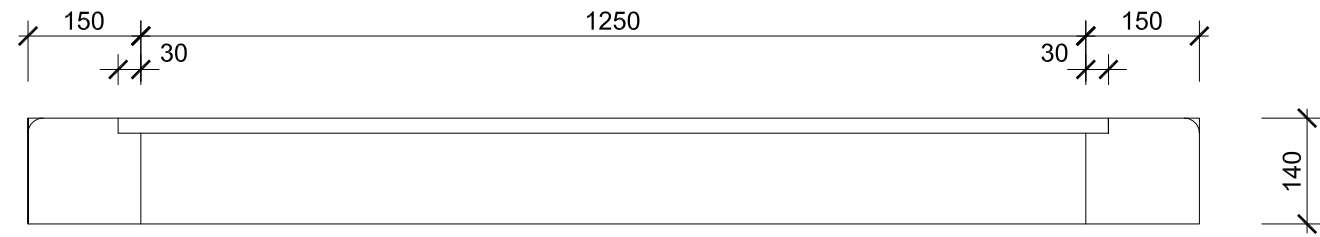
PARTS



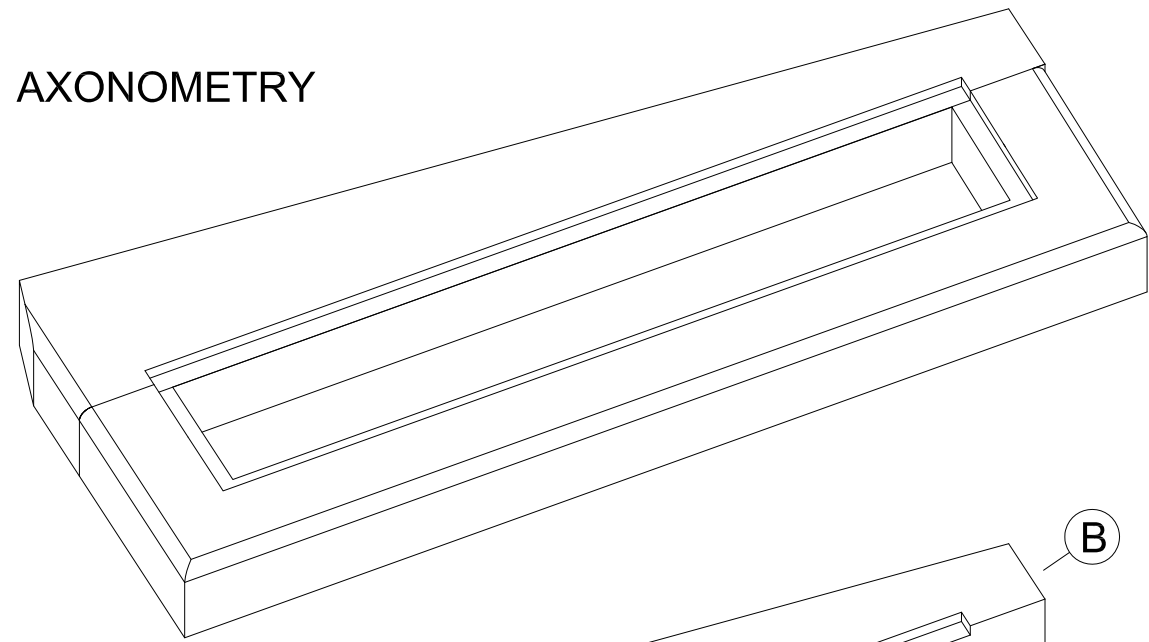
SIDE VIEW



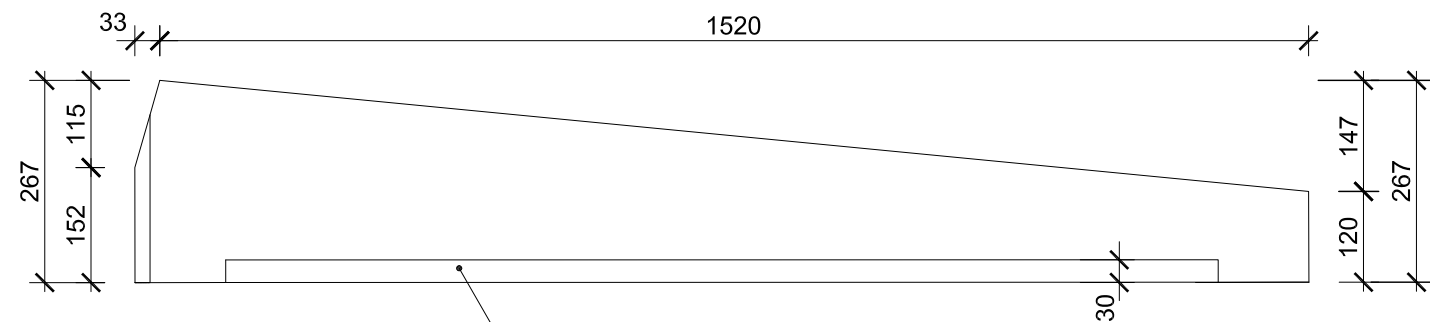
B - FRONT



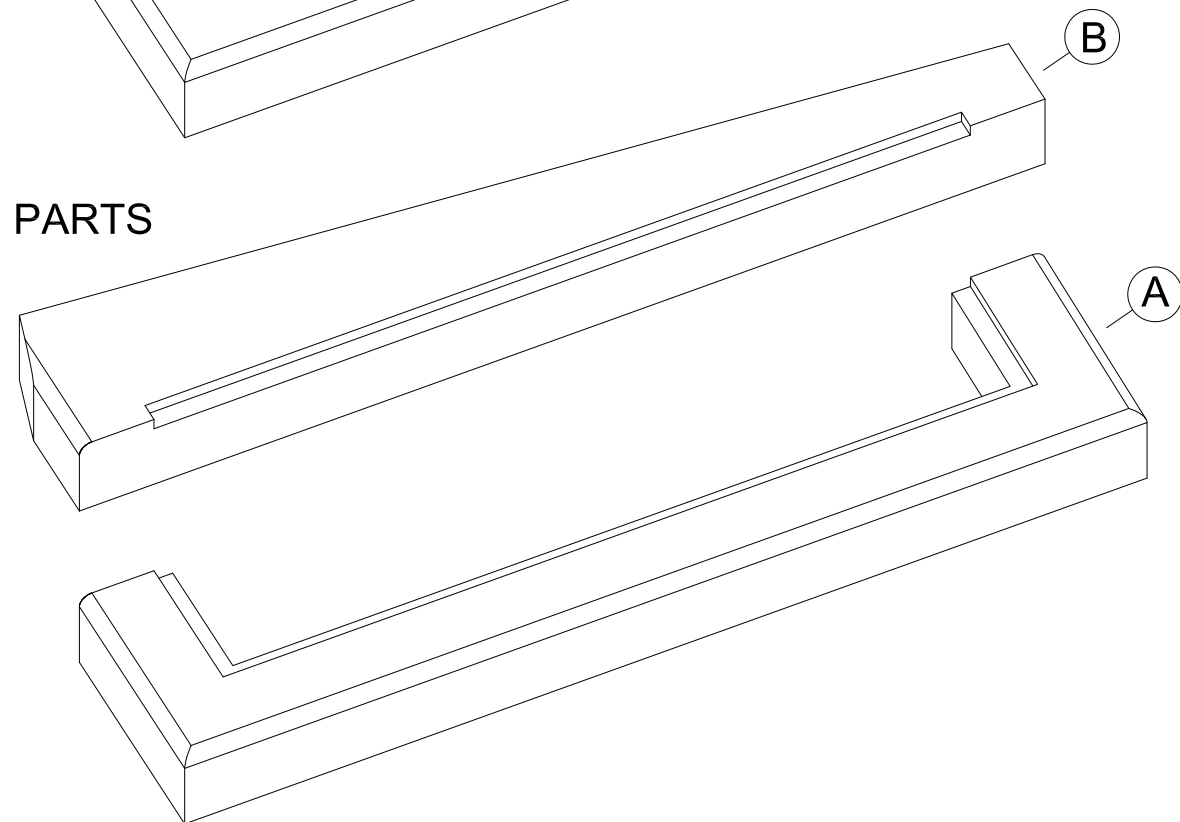
AXONOMETRY



B - PLAN



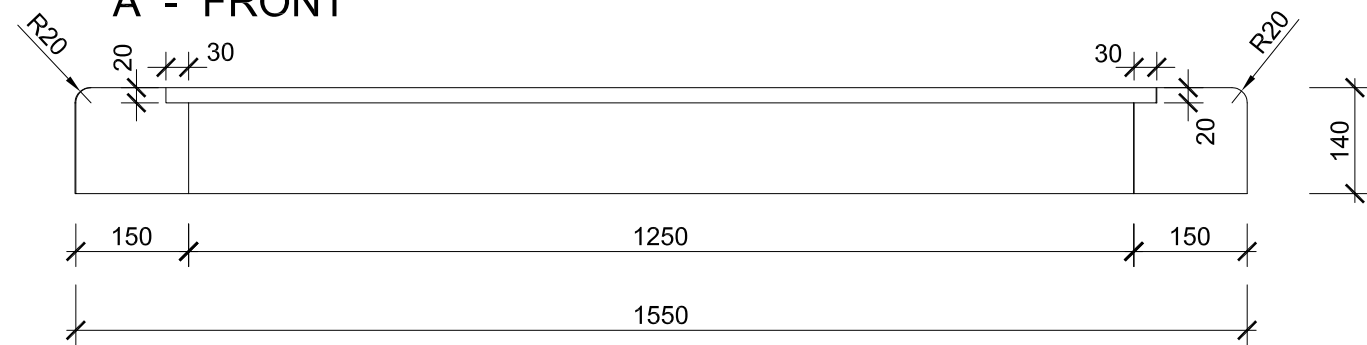
PARTS



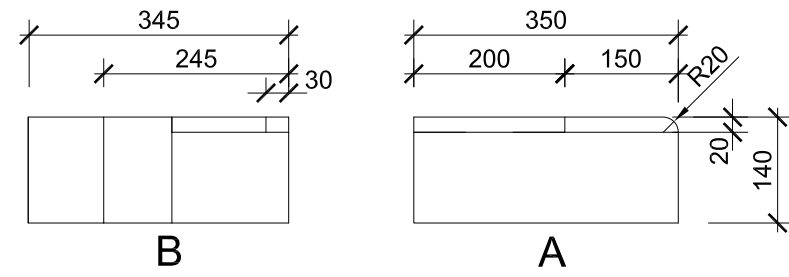
A - PLAN



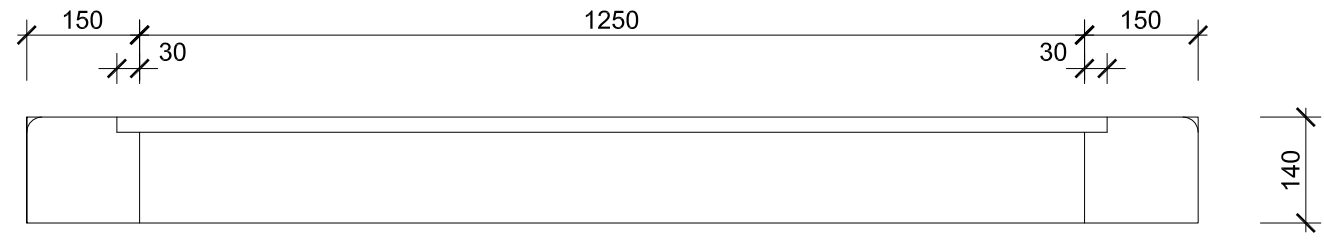
A - FRONT



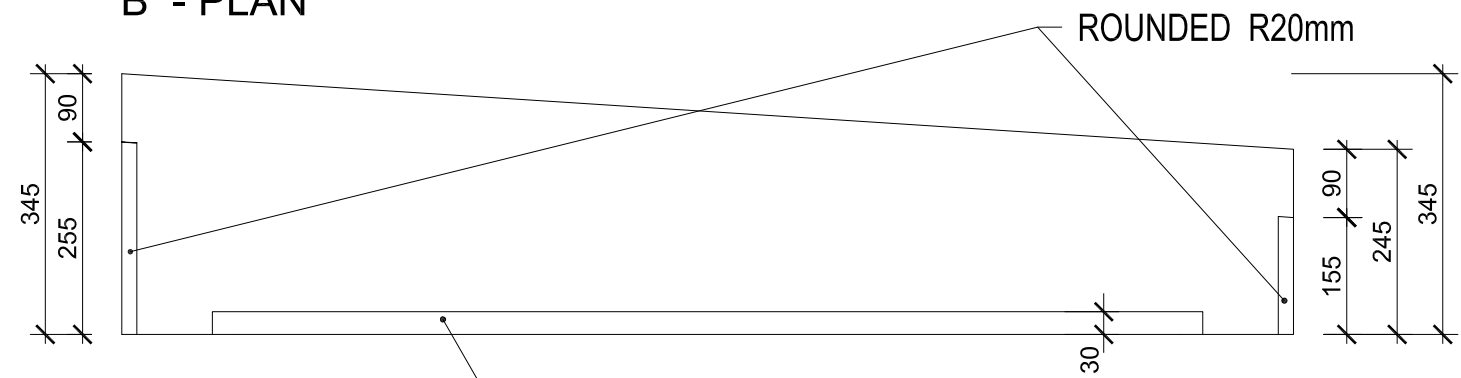
SIDE VIEW



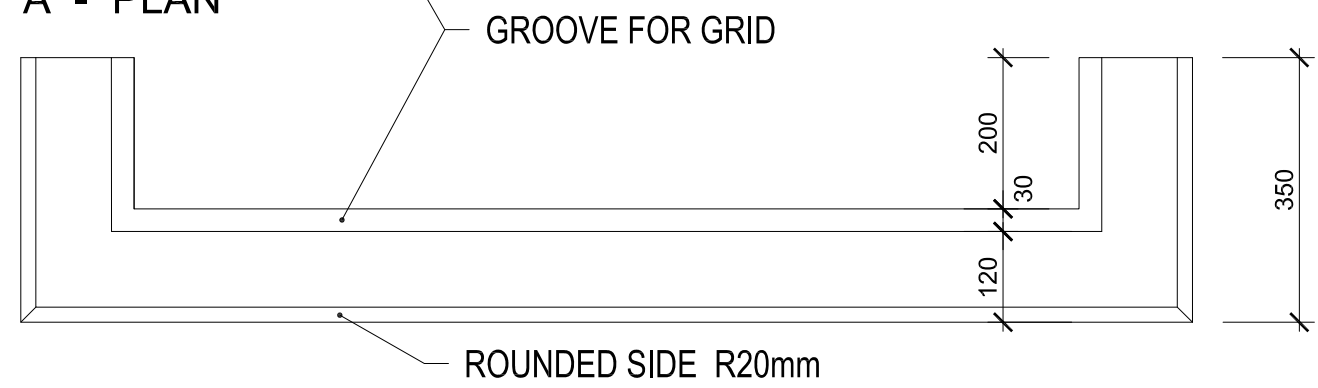
B - FRONT



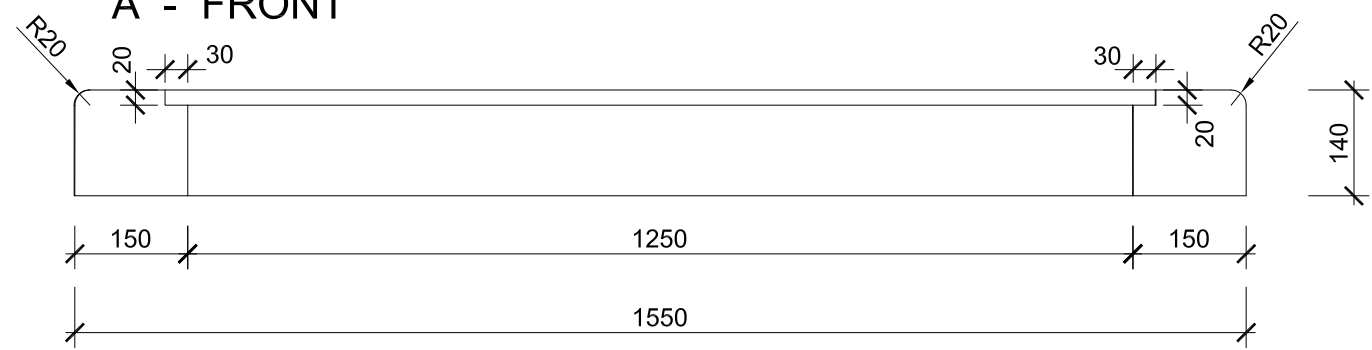
B - PLAN



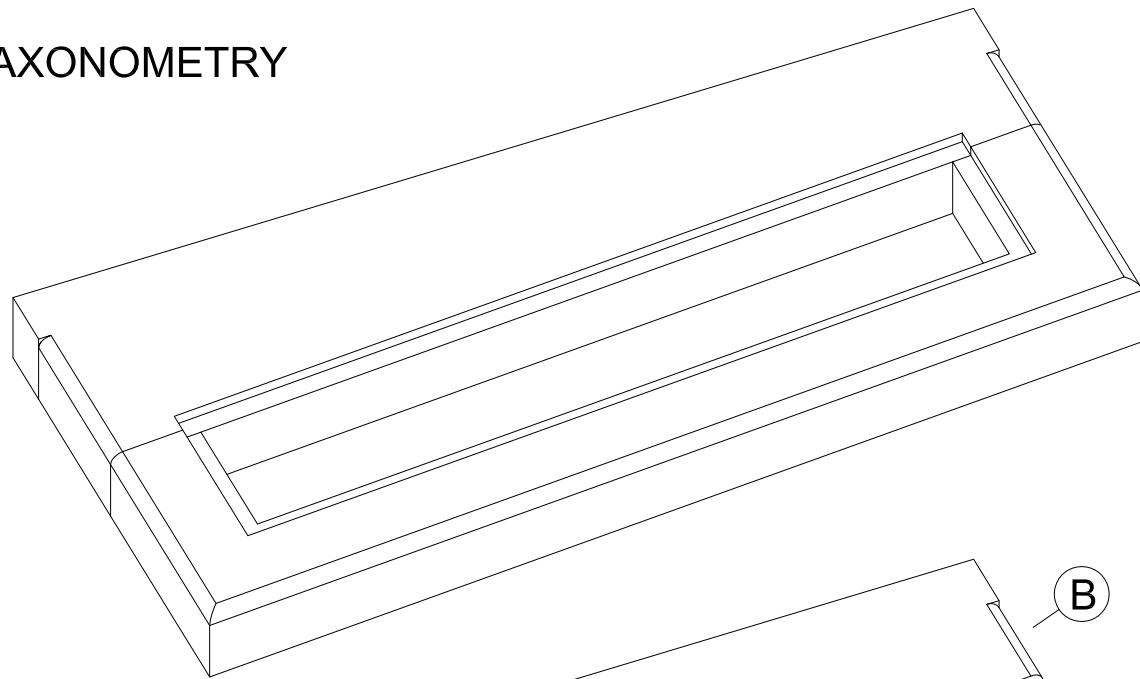
A - PLAN



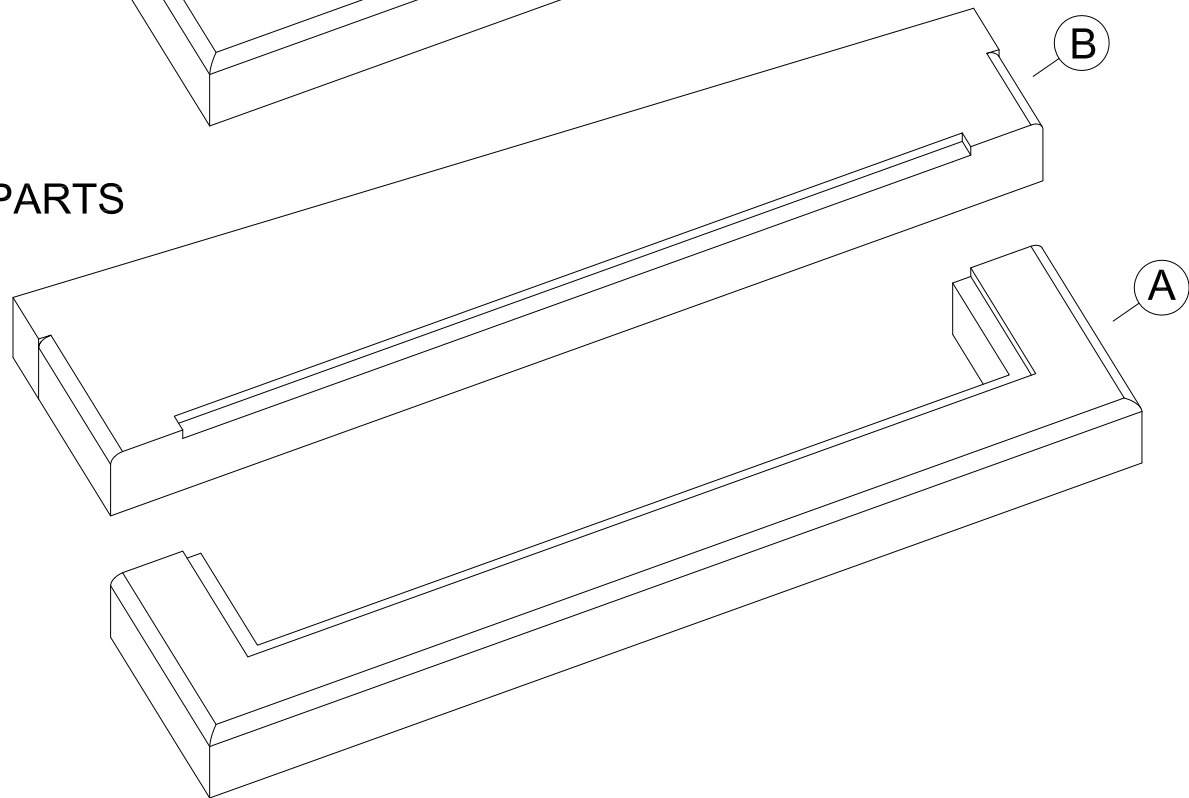
A - FRONT



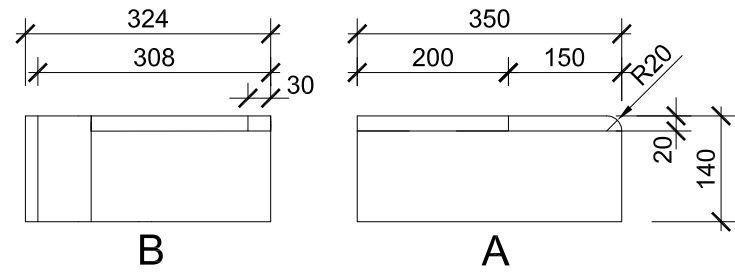
AXONOMETRY



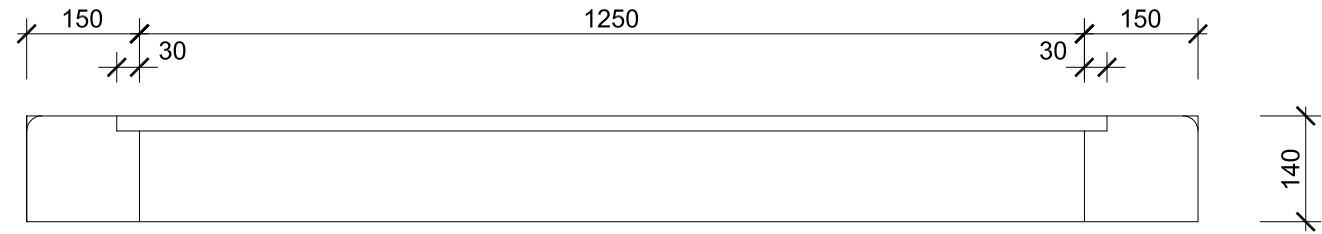
PARTS



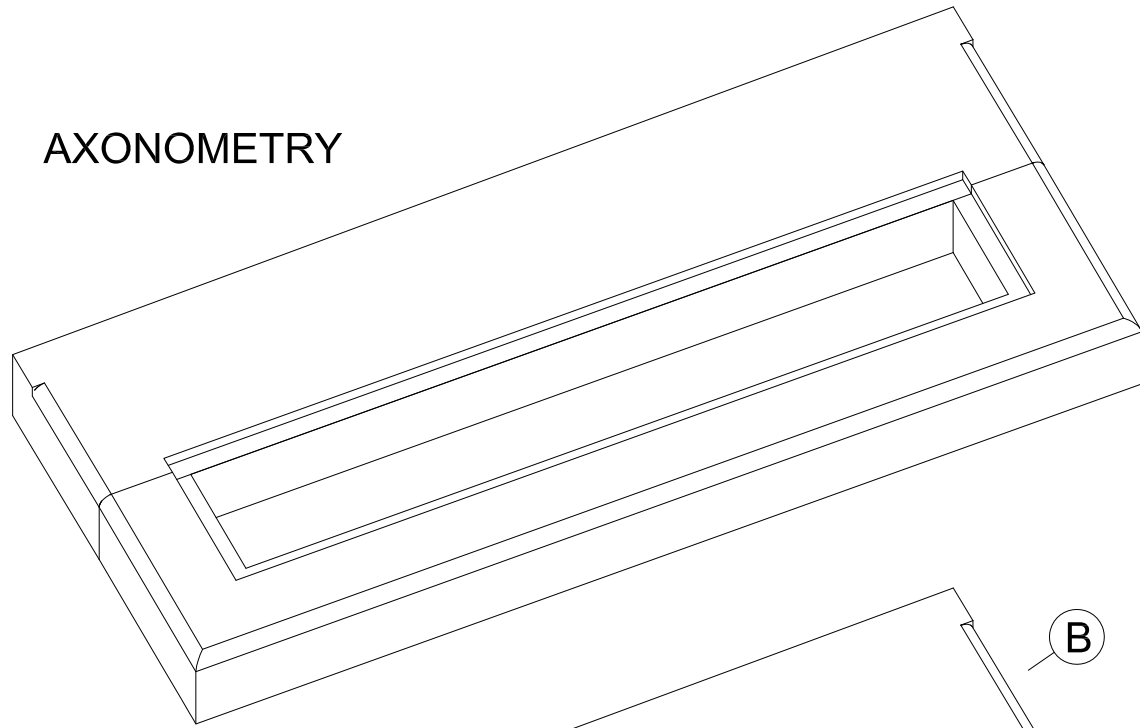
SIDE VIEW



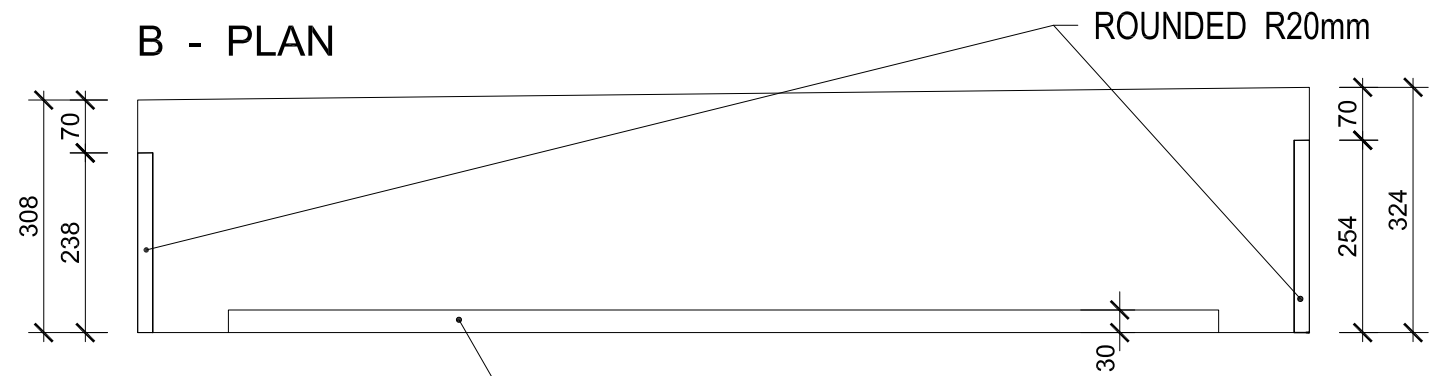
B - FRONT



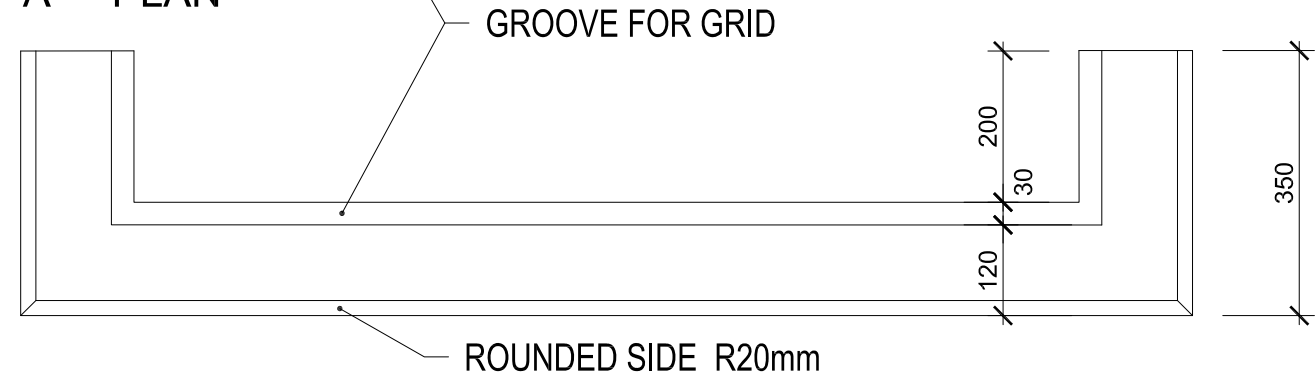
AXONOMETRY



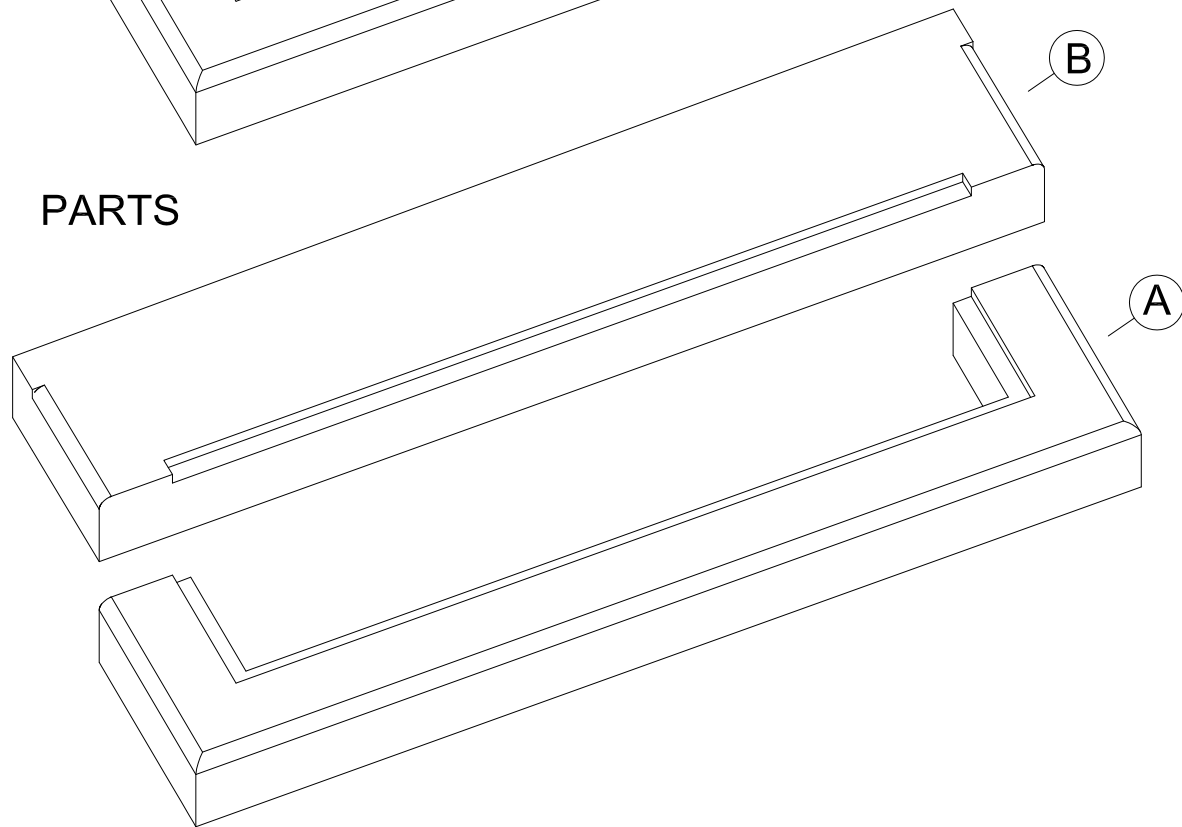
B - PLAN



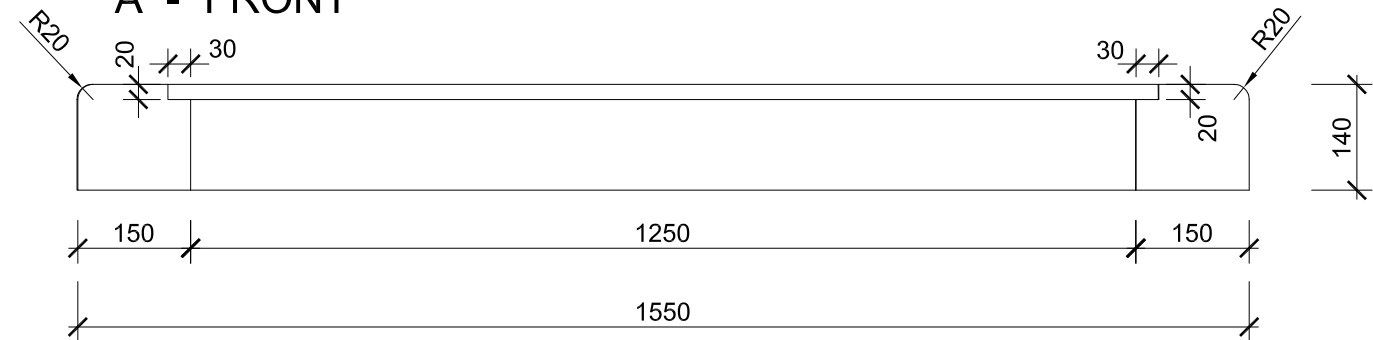
A - PLAN



PARTS

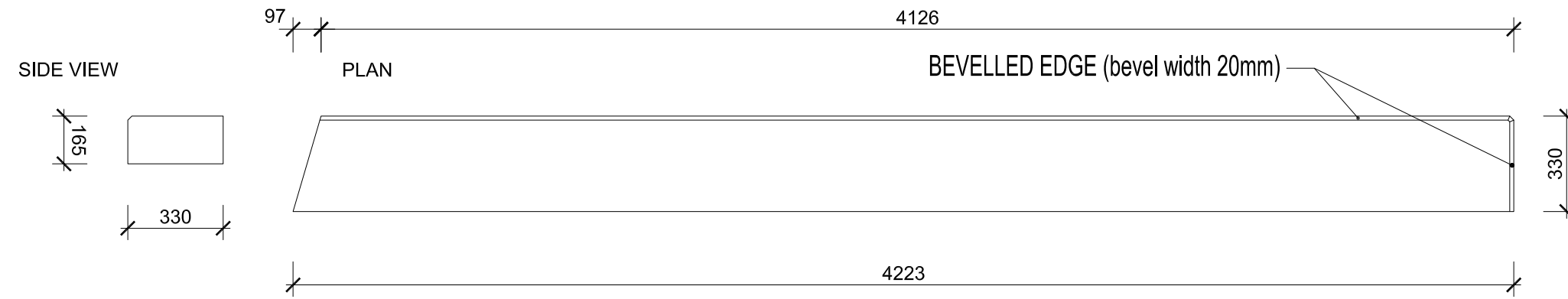


A - FRONT



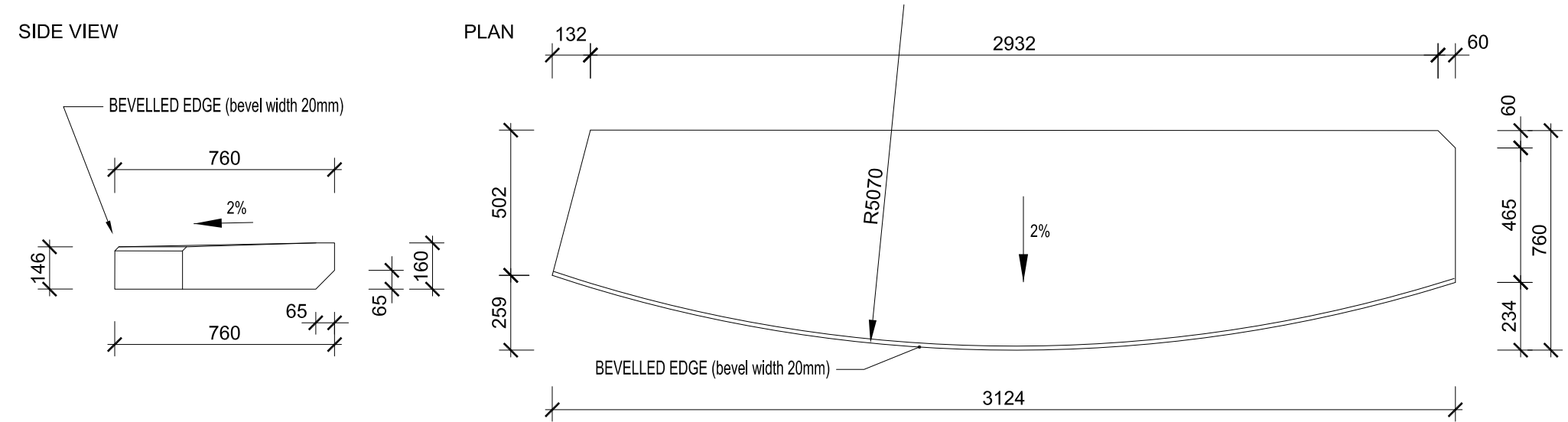
detail of kerbstone for terrace SW 5

m 1:20



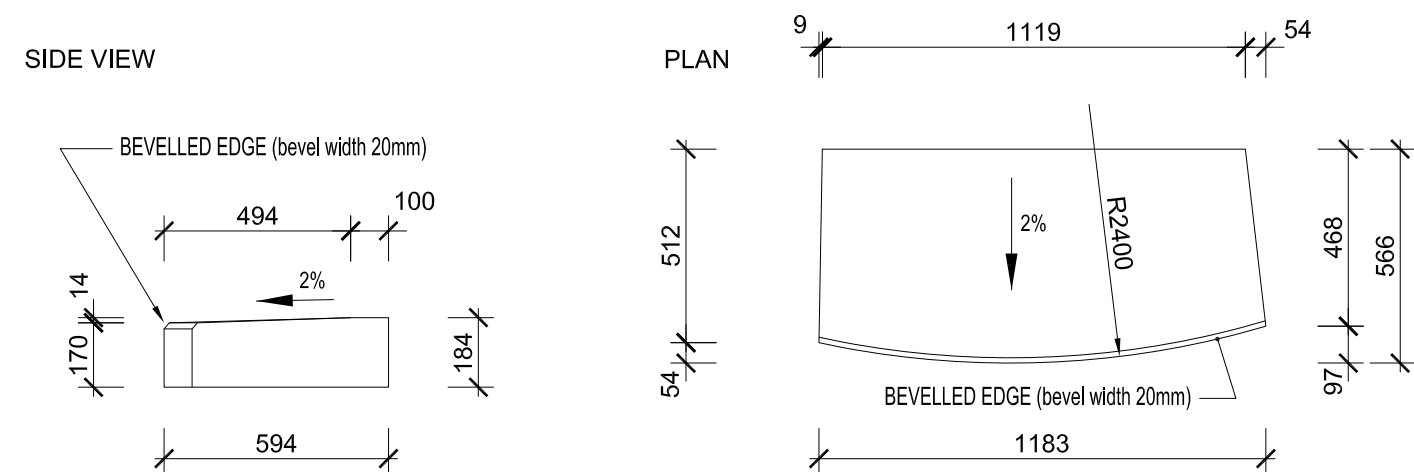
detail of kerbstone under the main door SW 6

m 1:20

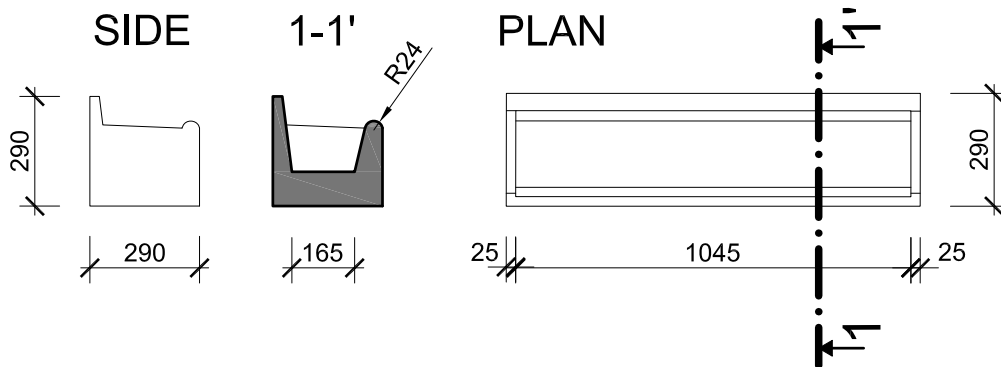


detail of kerbstone under door SW7

m 1:20



SW8

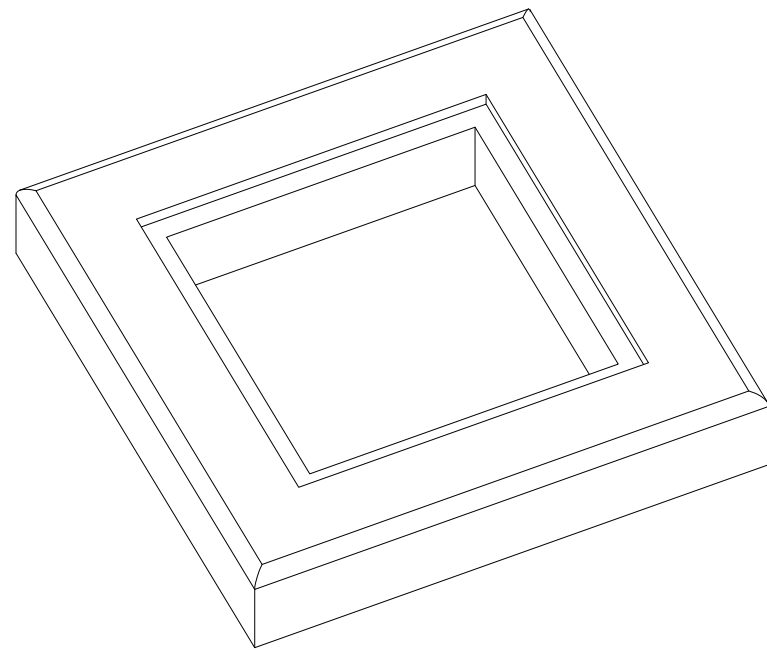


SW8

### KERBSTONE FOR MANHOLES OF SEWERAGE

can be made from more parts, ofcourse..

### AXONOMETRY



### PLAN

